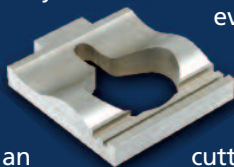




Exceptional customers like you deserve Precision Punch's exceptional products and services. So, we are offering you, our customer, an exclusive opportunity to have all your wire EDM needs serviced by Precision Punch. We've spared no expense in creating an unrivaled combination of clean-room grade facility and state-of-the-art EDM machine and testing equipment. That means that you can expect the same uncompromising standards and superior quality that we demand in the manufacturing of our own products.

#### A Cut Above

At Precision Punch, we've heavily invested in our wire



EDM shop. Unlike some other shops, ours is an ultimate clean-room grade, climate-controlled facility. It's custom-built to ensure consistency and exactness in every cut and every part. In this sophisticated workplace, our advanced wire EDM machine integrates high cutting speed and accuracy with powerful process control for 0.0001 dimensional accuracy and precision. The environment is also ideal for our SmartScope Quest 250 measurement system that provides resolution to 0.000002 inch and produces systematic dimensional reports on every job.

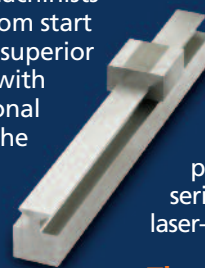


#### Wired for Service

Our experienced team of engineers and machinists work with you from start to finish, blending superior custom capabilities with specialized professional talent. You receive the service you deserve, and your product meets the specifications you prescribe. Our careful planning and efficient production strategies translate into unequalled turn-around time and extraordinarily quick delivery.

#### Put Us to the Test

Just as we are vigilant in inspecting our own products, we offer the same inspection capabilities as a separate



service to our customers. We apply our expertise in dimensional metrology and our SmartScope Quest 250 measurement quality assurance to products manufactured outside of our shop. We can provide certification, serial number and laser-marking services as well.

#### The One-Stop Shop

From inception to inspection, whether you are creating one piece or high-volume replicated production, every part cut in our facility must meet our renown quality standards of design, materials, qualification, and inspection.



## Our state-of-the-art wire EDM capabilities.

## For all your outside-the-box ideas.

#### The wire EDM shop with the unrivaled combination of:

- Clean-room laboratory quality controlled environment
- Technically advanced wire EDM machine for accuracy & speed
- SmartScope Quest 250 state-of-the-art measurement system 0.0001" dimensional precision, 0.0000002" resolution
- Experienced and expert engineers and machinists
- Fastest turnaround and delivery time
- Precision Punch's reputation for accuracy, quality and service

Give us a call today.  
We'll show you how  
Precision Punch will fill  
your wire EDM needs...  
precisely!



304 Christian Lane, Berlin, CT 06037  
sales@ppunch.com • www.ppunch.com



## High Quality Products Made in the U.S.A.

Precision Punch Corporation is a premier manufacturer of punches, dies, perforators, and precision ground cylindrical parts. In addition to a full line of standard products, Precision Punch manufactures high-precision components to customer specifications.

Every day, for every client, for every project, we dedicate the resources and energy necessary to provide unsurpassed quality of products and service.

We build perfection in every part we manufacture, we never settle for anything less than best.

Our custom capabilities are unmatched. Our team of process engineers will work with you from start to finish. They will evaluate your specifications and design a process using state-of-the-art equipment operated by highly skilled, experienced operators to consistently fulfill your requirements. You can count on us to meet your specifications and exceed your expectations.

## Made in the U.S.A.

With over 44,000 square feet of manufacturing space in our facility in Berlin, CT, we combine the latest in state-of-the-art equipment with almost 50 years of professional manufacturing experience. This results in products that consistently meet the most precise requirements and stand up to the most rigorous demands.

## Partnering

We are committed to developing close and long-term relationships with our customers. These ongoing partnerships enable us to provide optimum value and pricing along with reliable, timely deliveries.

## ISO 9001 Certified/ISO 13485 Certified

ISO 9001 Certification attests to our meeting the international criteria for quality management principles, including a strong customer focus, the motivation and implication of top management, the process approach, and continual improvement. ISO 13485 Certification attests to our meeting the requirements for medical devices and related services that consistently meet customer requirements and regulatory requirements applicable to medical devices and related services.



**PRECISION  
PUNCH**  
*Defining Excellence*

**860.229.9902**

304 Christian Lane, Berlin, CT 06037  
[sales@ppunch.com](mailto:sales@ppunch.com) • [www.ppunch.com](http://www.ppunch.com)